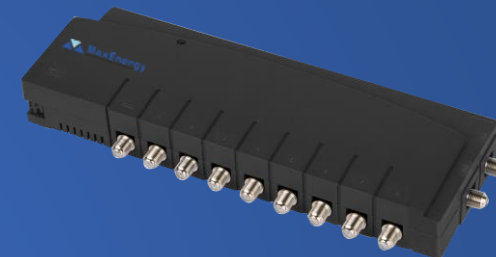


Indoor Amplifier



Specifications

Model	AMP-1702F	AMP-1704F	AMP-1706F	AMP-1708F
Number of Output	2	4	6	8
Frequency Range(MHz)	VHF:45-230MHz UHF:47-862MHz	VHF:45-230MHz UHF:47-862MHz	VHF:45-230MHz UHF:47-862MHz	VHF:45-230MHz UHF:47-862MHz
Gain	16dB	12dB	10dB	10dB
Noise Figure	5dB	5dB	5dB	5dB
Isolation	20dB	20dB	20dB	20dB
Power Requirement	90-230V/60Hz			



Indoor Amplifier



Specifications

Model	AMP-1731	AMP-1732	AMP-1733	AMP-1734	AMP-1735	AMP-1736
Number of Output	1	2	3	4	5	6
Frequency Range(MHz)	VHF:45-230MHz UHF:47-862MHz	VHF:45-230MHz UHF:47-862MHz	VHF:45-230MHz UHF:47-862MHz	VHF:45-230MHz UHF:47-862MHz	VHF:45-230MHz UHF:47-862MHz	VHF:45-230MHz UHF:47-862MHz
Gain	16dB	12dB	10dB	10dB	10dB	10dB
Noise Figure	3dB	3dB	3dB	3dB	3dB	3dB
Lsolation	20dB	20dB	20dB	20dB	20dB	20dB
Power Requirement	90-230V/60Hz					

Indoor Amplifier



Specifications

Model	AMP-1721	AMP-1722
Number of Output	2	4
Frequency Range(MHz)	VHF:45-230MHz UHF:47-862MHz	VHF:45-230MHz UHF:47-862MHz
Gain	16dB	12dB
Noise Figure	5dB	5dB
Isolation	20dB	20dB
Power Requirement	90-230V/60Hz	

Indoor Amplifier



AMP-1714



AMP-1712F



AMP-1713

Specifications

Model	AMP-1714	AMP-1712F	AMP-1713
Number of Output	3	1	2
Frequency Range(MHz)	VHF:45-230MHz UHF:47-862MHz	VHF:45-230MHz UHF:47-862MHz	VHF:45-230MHz UHF:47-862MHz
Gain	VHF:20dB UHF:20dB	VHF:20dB UHF:20dB	VHF:20dB UHF:20dB
Noise Figure	3dB	3dB	3dB
Isolation	20dB	20dB	20dB
Power Requirement	90-230V/60Hz	90-230V/60Hz	90-230V/60Hz

Outdoor Amplifier



AMP-1702F



AMP-1706F

Specifications

Model	AMP-1752F	AMP-1754F	AMP-1756F	AMP-1758F
Number of Output	2	4	6	8
Frequency Range(MHz)	VHF:45-230MHz UHF:47-862MHz	VHF:45-230MHz UHF:47-862MHz	VHF:45-230MHz UHF:47-862MHz	VHF:45-230MHz UHF:47-862MHz
Gain	16dB	12dB	10dB	10dB
Noise Figure	5dB	5dB	5dB	5dB
isolation	20dB	20dB	20dB	20dB
Power Requirement	90-230V/60Hz			